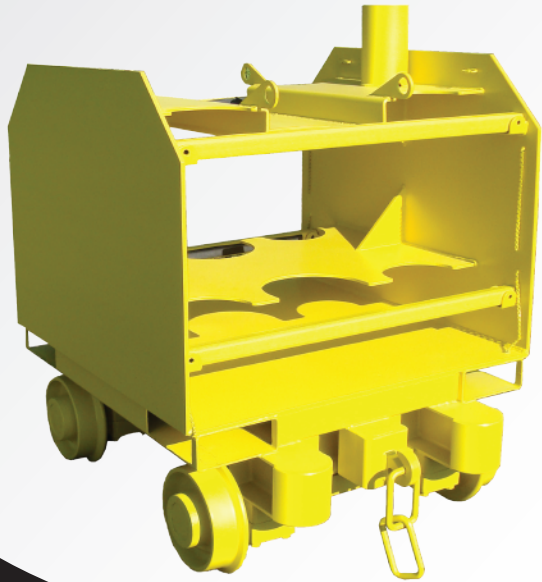




**MATERIAL HANDLING
SOLUTIONS**

COMPRESSED BOTTLE RACK



Stanley Appleton has improved our line of Compressed Bottle Racks. Each Bottle Rack can accommodate up to 6 bottles and is equipped with 4 way lifting pockets.

The Compressed Bottle Racks have moveable safety bars to allow for proper positioning of each bottle. Each Rack is also designed for a mine track with a tow chain to allow multiple racks to be linked together.

Stanley Appleton's Compressed Bottle Racks are available in your choice of Steel, Aluminum and Stainless Steel.

Your options include:

- Size
- Colour
- Customized ID Plate
- Wheel Sizes
- Track Gauge

